

## Connectors

M12 connection technology

4 pin

Female connector with coupling nut, A coded, right-angle



Analog output



### Order details

Order no.

For supply voltage

**05.B8241-0**

### Technical data

#### Connector housing

material plastic  
protection IP67

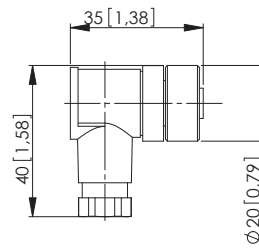
#### Cable connection

connection technology screw  
for cable cross sections  $\varnothing$  4 ... 6 mm

#### Working temperature range

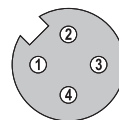
-40 °C ... +85 °C [-40 °F ... +185 °F]

Dimensions in mm [inch]



### Connections

Plug-in face, A coded



### Suitable for our series

Encoders singleturn	Encoders multiturn	Draw-wire encoders	Linear measuring systems	Inclinometers
M3651A(R) / M3671A	M3661(R) / M3681	A41	Limes KIT TB1	IN81
M3658A / M3678A	M3668 / M3688	A50		
M5851A	M5861	B75		
M5858A	F5868 / F5888	B80		
F5858 / F5878	S5868 / S5888	C60		
S5858 / S5878	5868 / 5888	C100		
5858 / 5878	S3684	C105		
S3674		C120		
		D120		
		D125		
		D135		