

Connectors

M12 connection technology

5 pin

Female connector with coupling nut, A coded, right-angle



CANopen

CANopen
LIFT

Modbus

SAE J1939

Order details

Order no.

05.B-8251-0/9

Technical data

Connector housing

material plastic
protection IP67

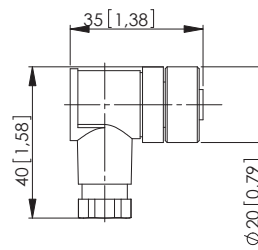
Cable connection

connection technology screw
for cable cross sections $\varnothing 6 \dots 8 \text{ mm}$

Working temperature range

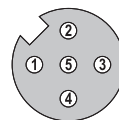
$-30 \text{ }^{\circ}\text{C} \dots +80 \text{ }^{\circ}\text{C}$ [$-22 \text{ }^{\circ}\text{F} \dots +176 \text{ }^{\circ}\text{F}$]

Dimensions in mm [inch]



Connections

Plug-in face, A coded



Suitable for our series

Encoders incremental	Encoders singleturn	Encoders multiturn	Draw-wire encoders	Linear measuring systems	Inclinometers	Slip rings
5000 / 5020	3651 / 3671	M3661(R) / M3681	A41	Limes KIT TB1	IN88	SR160
KIS50 / KIH50	M3651A(R) / M3671A	M3668(R) / M3688	A50			
A02H	M3658A(R) / M3678A	F3668 / F3688	B75			
	F3658 / F3678	5868 / 5888	B80			
	5858 / 5878	M5861	C60			
	M5851A	M5868	C100			
	M5858A	F5868 / F5888	C105			
	S3674	F5888M Motor-Line	C120			
		S3684	D120			
			D125			
			D135			